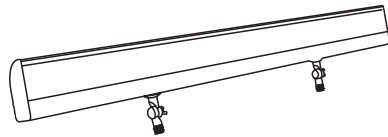
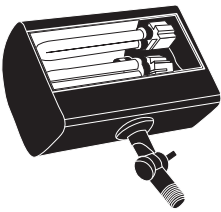


80095 Series
Small



80095 Series
Large



Wattage 13, 26
Height 4.5"
Width 8.25"
Depth 2.5"

Wattage 32 & 2x32
Height 4.5"
Width 48.0"
Depth 2.5"

Wattage 64
Height 4.5"
Width 96.0"
Depth 2.5"

Standard Specifications

Housing | Black Extruded Aluminum
Lens | UV Stabilized Clear Acrylic
Ballast | *i* 120 Volt/60Hz Magnetic NPF
| *ii* 120 Volt/60Hz Electronic NPF
Lamp(s) | Lamp Included (Except T-8 Version)
UL Label | †Wet Location Listed

Custom Option Specifications

277 | 277V/60Hz (Sign Lighter Only)
41K | 41K Cool White Lamp(s)
Cx | Custom Wattage
27K | 27K Bulb
35K | 35K Bulb
41K | 41K Bulb
50K | 50K Bulb
65K | 65K Bulb
NL | No Lamps

Replacement Parts

LENS-8009 | Replacement Clear Acrylic Lens
(Specify Length)

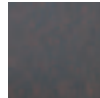
Accessories

79325
Black Easy Post



Available Finishes

-3
Brushed Rust



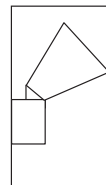
-4
Brushed Verde



-5
Black



Knuckle Mount



Product Family	Lens Type	Finish	Wattage	Options*
800	9			
800	9 - Clear Smooth Acrylic	3 - Brushed Rust 4 - Brushed Verde 5 - Black	13 - (1) 13 Watt Twin Tube (<i>i</i>) 26 - (2) 13 Watt Twin Tube (<i>i</i>) 32 - (1) 32 Watt (T8) 4 foot (<i>ii</i>) 64 - (2) 32 Watt (T8) 8 foot (<i>ii</i>) 2x32 - (2) 32 Watt (T8) 4 foot (<i>ii</i>)	277 - 277 Volt Ballast* (Sign Lighter Only) 79325 - Black Easy Post 